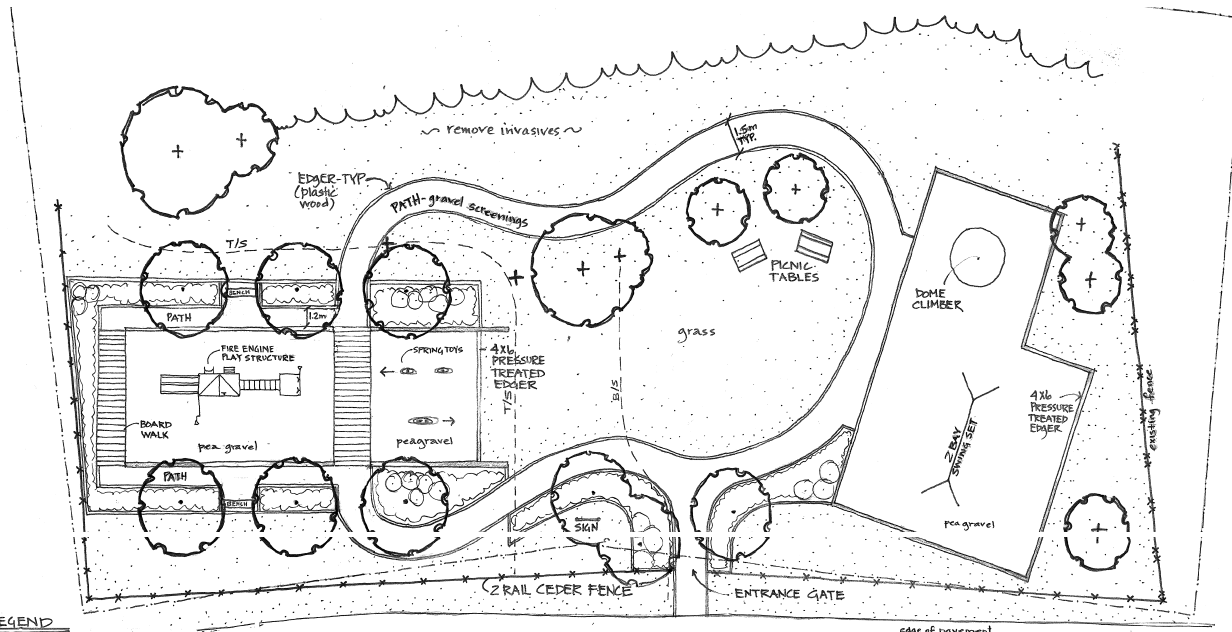


# THELMA GRIFFITHS COMMUNITY PARK is getting a facelift!

After community consultation, plans to refurbish the park and to install new play equipment are going forward! Site preparation and construction is scheduled to begin in March and should be completed by April. **PLEASE NOTE** that during this time the park will be closed.



## WOULD YOU LIKE TO HELP BUILD THE PARK?

The RDN Parks and Recreation Dept. in cooperation with the South Wellington Area Community Association (SWACA) is hosting a number of community volunteer days to help make this park a reality (dates to be announced). *Come on out and help build your community!*

For more information please contact Elaine McCulloch, RDN Parks Planner at 250.248-3252 or [emcculloch@rdn.bc.ca](mailto:emcculloch@rdn.bc.ca)

